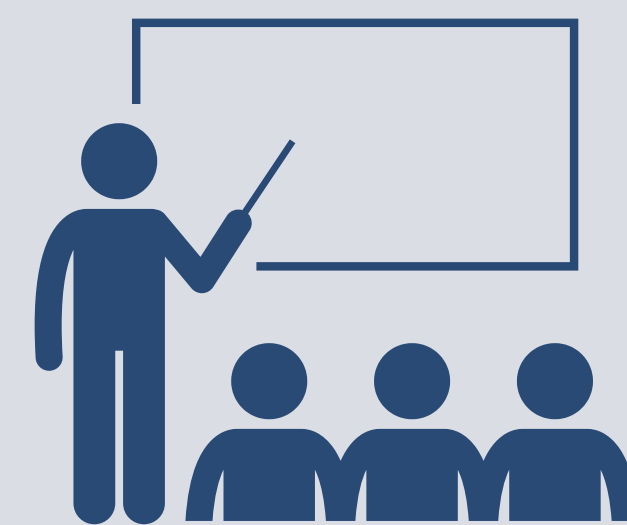


What should I consider when working with equipment containing PCBs?

BEFORE

- 1 You should receive training in
 - PCBs and their risks to human health and environment
 - Occupational health and safety
 - Emergency and contingencies response
 - Personal Protective Equipment (PPE)
 - First aid



- 2 Review all safety regulations established in your workplace regarding PCBs.



DURING

- 1 Wear the appropriate PPE according to the work you are going to perform.



- 2 Strictly comply with the safety regulations in your workplace.



AFTER

- 1 Shower and change clothes before leaving your workplace for home.



- 2 Your clothes should be washed and kept separate from those of your family.

